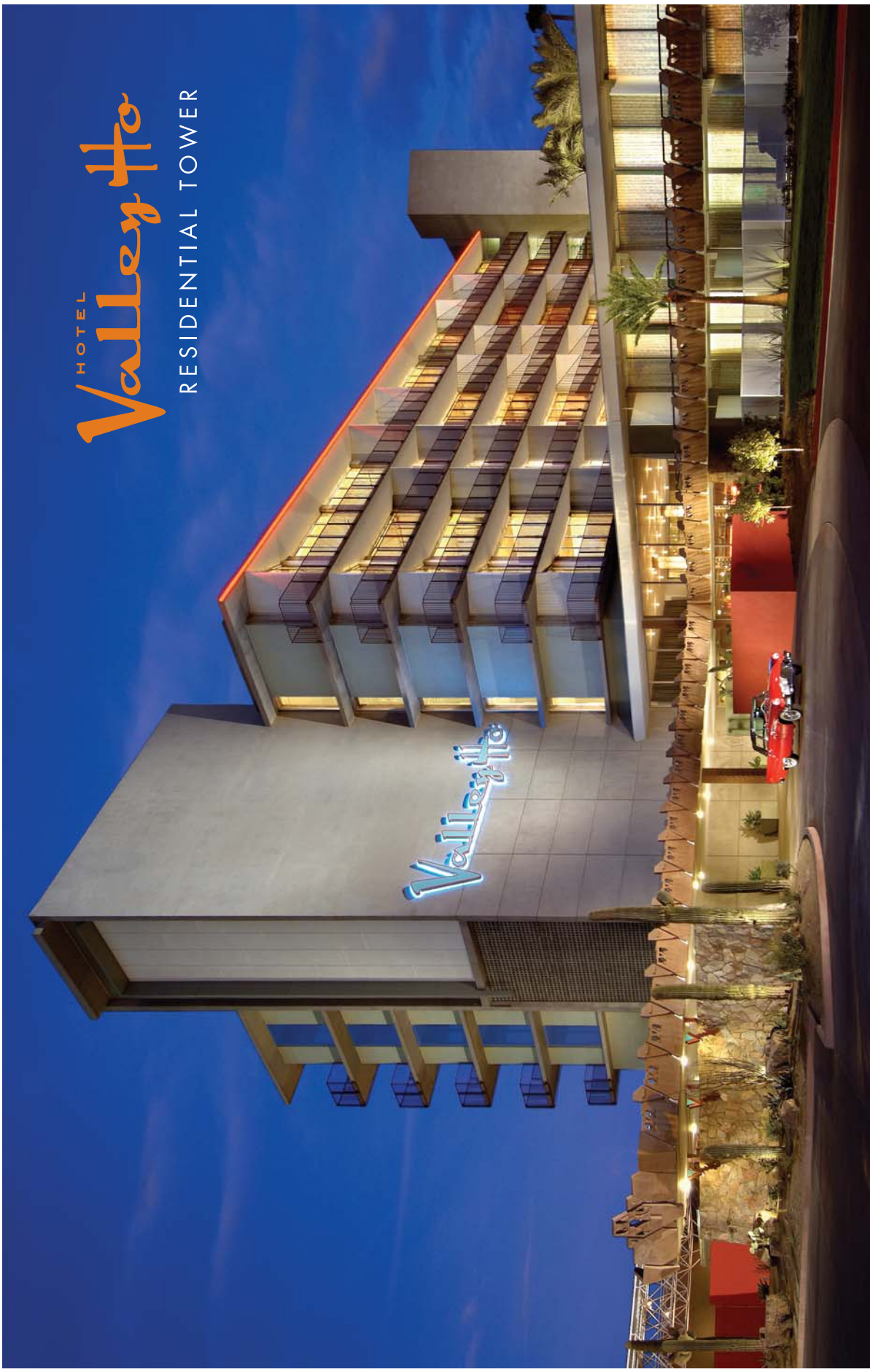


HOTEL
Valley Ho
RESIDENTIAL TOWER



the dream. the place. the life.

At this mid-century landmark, a one-of-a-kind Residential Tower offers all the benefits of resort living...in a sophisticated downtown Scottsdale setting with fabulous views.

The third through top floors of this seven-story tower feature elegant two-story lofts, one and two-bedroom condominiums, and exclusive penthouses — with prices from the \$700s.

Serving as both developer and operator, Westroc Hotels & Resorts brought together the design talents of Allen & Philp for architecture and Hayes Architecture/Interiors for interior design. From the floor-to-ceiling glass walls in the living room and master bedroom, to the top-of-the-line fixtures and appliances, every detail of these sophisticated homes reflects the clean, modern lines of classic mid-century design.

Every residence is enhanced by sweeping panoramic views, hotel services like housekeeping, concierge, valet and room service, and other privileges at Hotel Valley Ho.

location. location. location.

When it comes to nearby entertainment, downtown Scottsdale is the place to be. The best of the city's art galleries and shopping, dining and nightlife are all just a short stroll away. Also nearby are the spring training ballpark, world-famous golf, and the cultural pleasures of Scottsdale Center for the Arts and Scottsdale Museum of Contemporary Art.

Convenient access to the Hotel Valley Ho concierge services makes it even easier to enjoy living in the heart of Scottsdale.

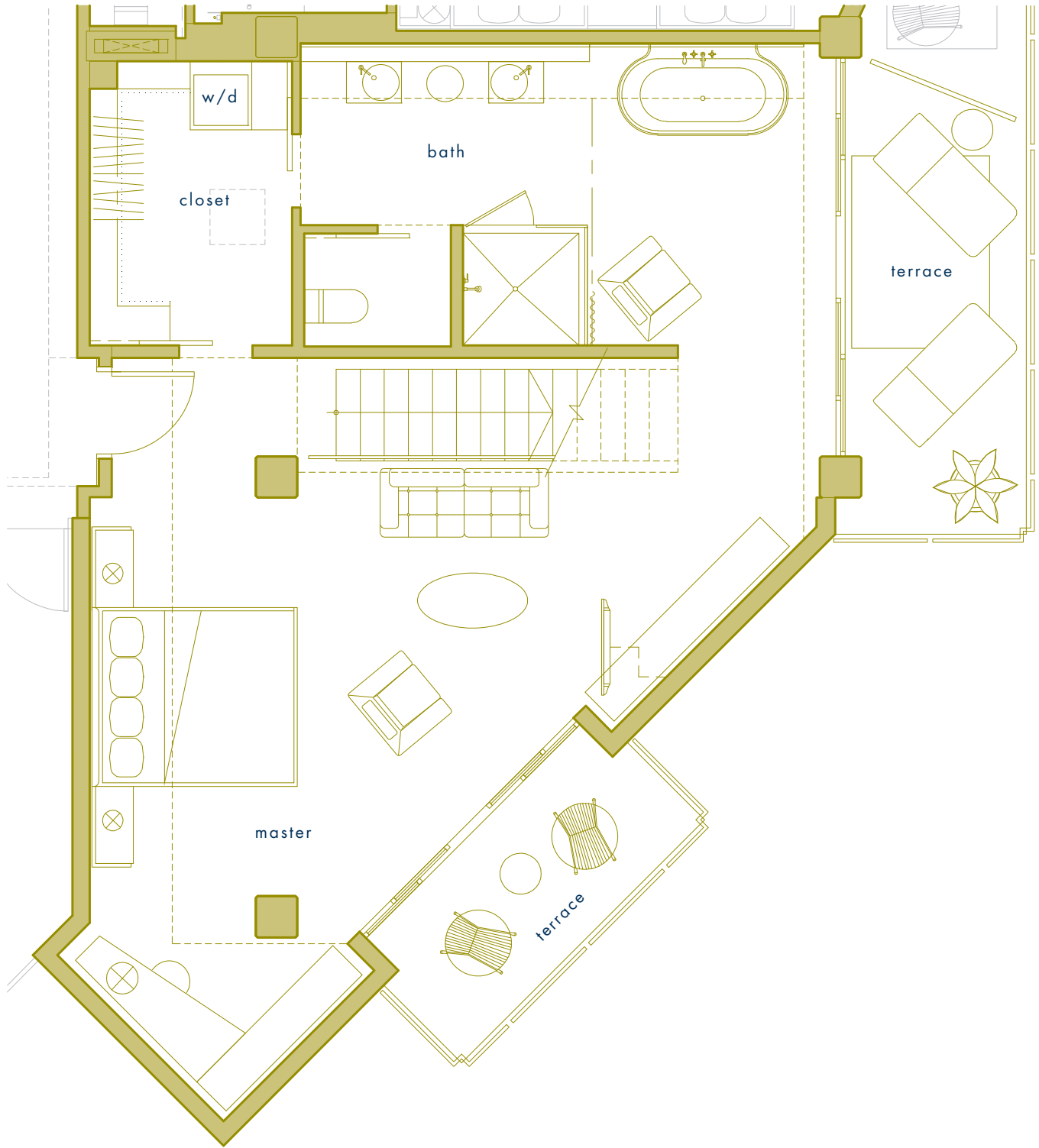
see it. share it. love it.

Residents of Hotel Valley Ho Residential Tower have the unique opportunity to choose the way they stay... whether it's full-time, part-time or just sometime. That's because the Tower offers a rental program as another convenience that comes with ownership. To learn more about the rental program, contact Andrew Chippindall, General Manager of Hotel Valley Ho at achippindall@hotelvalleyho.com or 480.248.2025.

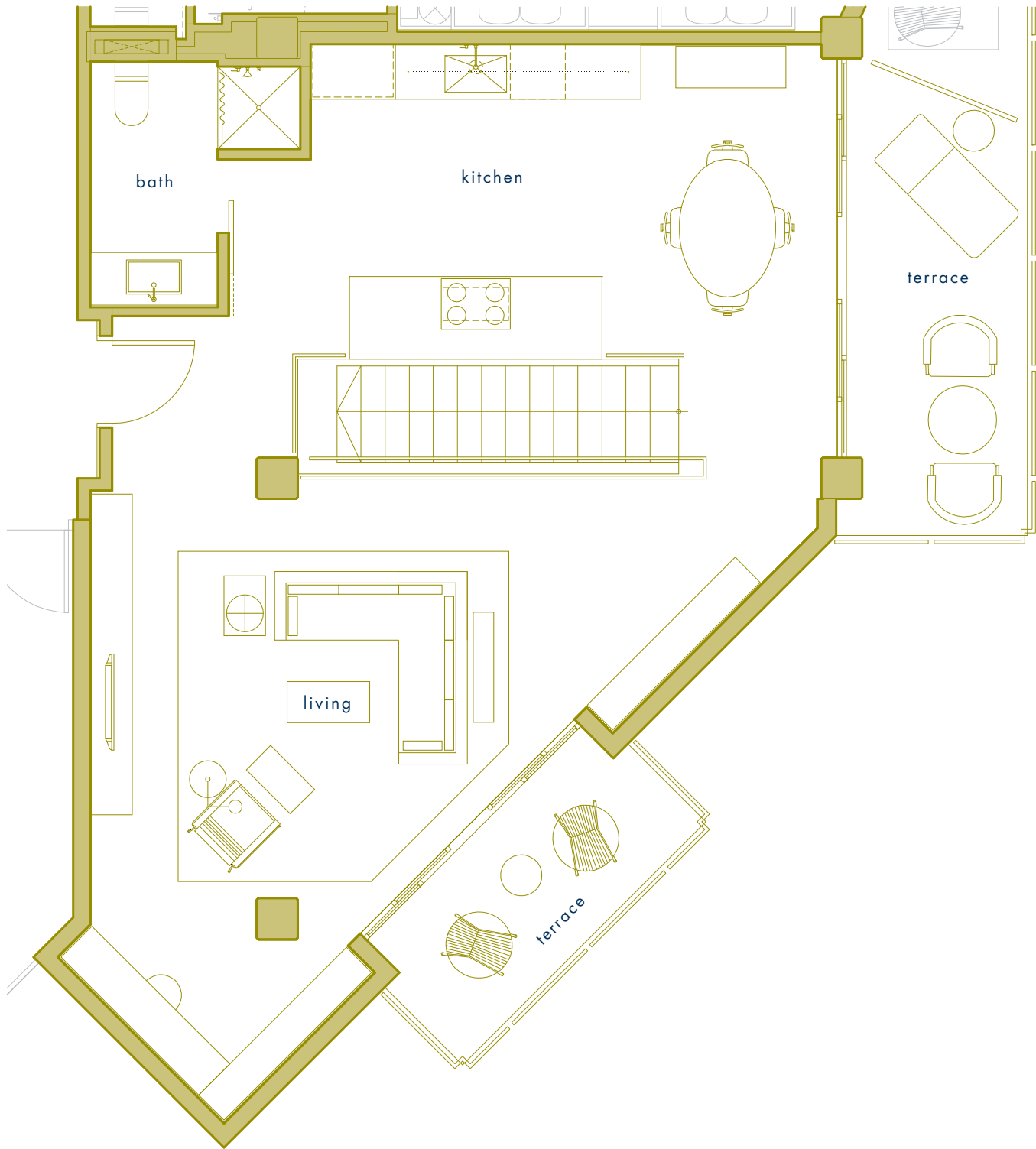
Tours and information are available by contacting the sales office at 480.421.7992.

residence number	square feet	luxury condominiums	price	hoa
3rd & 4th Floor Four Peaks #4413	1,335	One bedroom, 2 bath, 2-story residence with 2 private balconies facing the pool & the McDowell Mountains.	\$934,500	\$667.50/mo
3rd & 4th Floor Camelback #4416	1,497	One bedroom, 2 bath, 2-story residence with four private terraces with views of Camelback Mountain.	\$1,047,900	\$748.50/mo
5th & 6th Floor Camelback #6616	1,497	One bedroom, 2 bath, 2-story residence with four private terraces and views of Camelback Mountain.	\$1,197,600	\$748.50/mo
5th & 6th Floor Papago Loft #5500	1,995	Two bedroom, 2.5 baths, 2-story loft with 18 ft open air ceilings, 2 private balconies with views of sunsets and Camelback & Papago Mountains.	\$1,596,000	\$997.50/mo
7th Floor Penthouse #2	1,798	Exclusive residence: Two master bedrooms, 2.75 baths, single level, 11 ft ceilings, large private terraces, facing the pool & the McDowell Mtns. and overlooking Old Town Scottsdale.	\$1,618,200	\$894.50/mo
7th Floor Penthouse #3	1,786	Exclusive residence: Two master bedrooms, 2.75 baths, single level, 11 ft ceilings, large private terraces with views of Camelback & Papago Mountains.	\$1,610,100	\$899/mo
7th Floor Penthouse #4	1,789	Exclusive residence: Two master bedrooms, 2.75 baths, single level, 11 ft ceilings, large private terraces facing the pool & the McDowell Mountains and overlooking Old Town Scottsdale.	\$1,607,400	\$884/mo
7th Floor Penthouse #5	1,768	Exclusive residence: Two master bedrooms, 2.75 baths, single level, 11 ft ceilings, large private terraces with views of Camelback & Papago Mountains.	\$1,591,200	\$893/mo
7th Floor Penthouse #7	1,250	Exclusive residence: One master bedroom, 2 baths, single level, 11 ft ceilings, FULLY FURNISHED. Northwest end unit facing Camelback and North Scottsdale.	\$1,100,000	\$625/mo

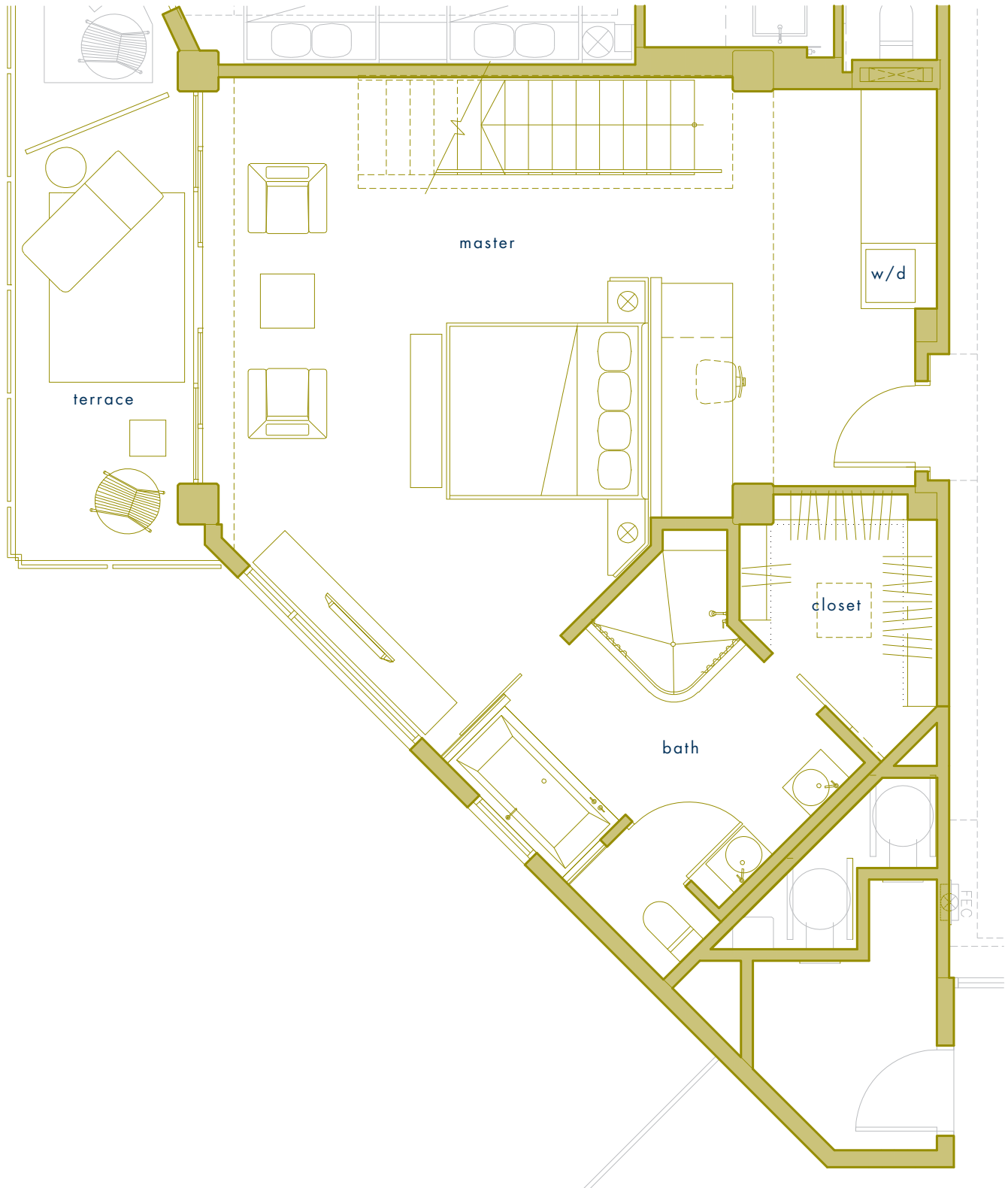
1497 INTERIOR
348 EXTERIOR
1845 TOTAL SQ. FT.



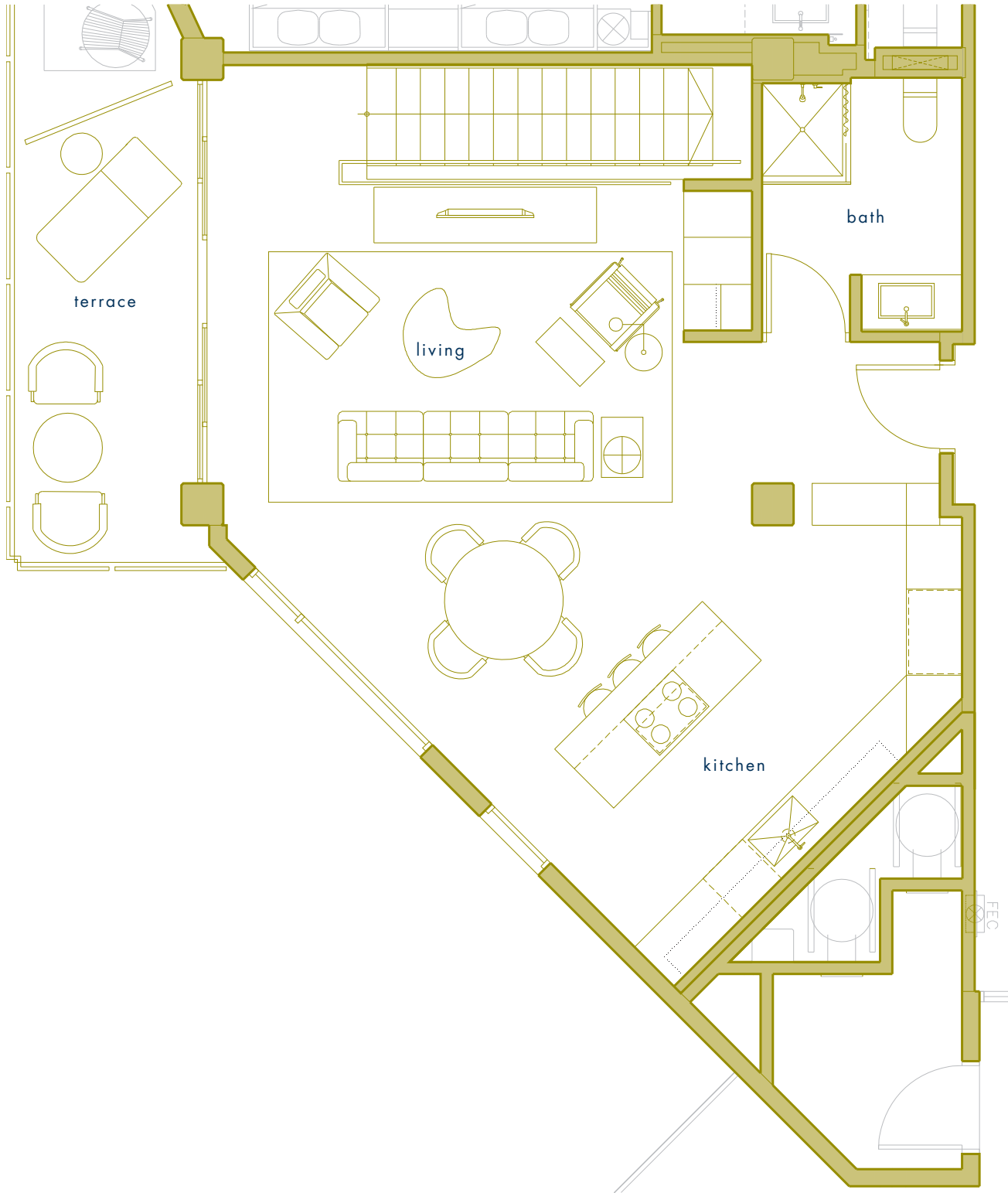
1497 INTERIOR
348 EXTERIOR
1845 TOTAL SQ. FT.



1335 INTERIOR
212 EXTERIOR
1547 TOTAL SQ. FT.



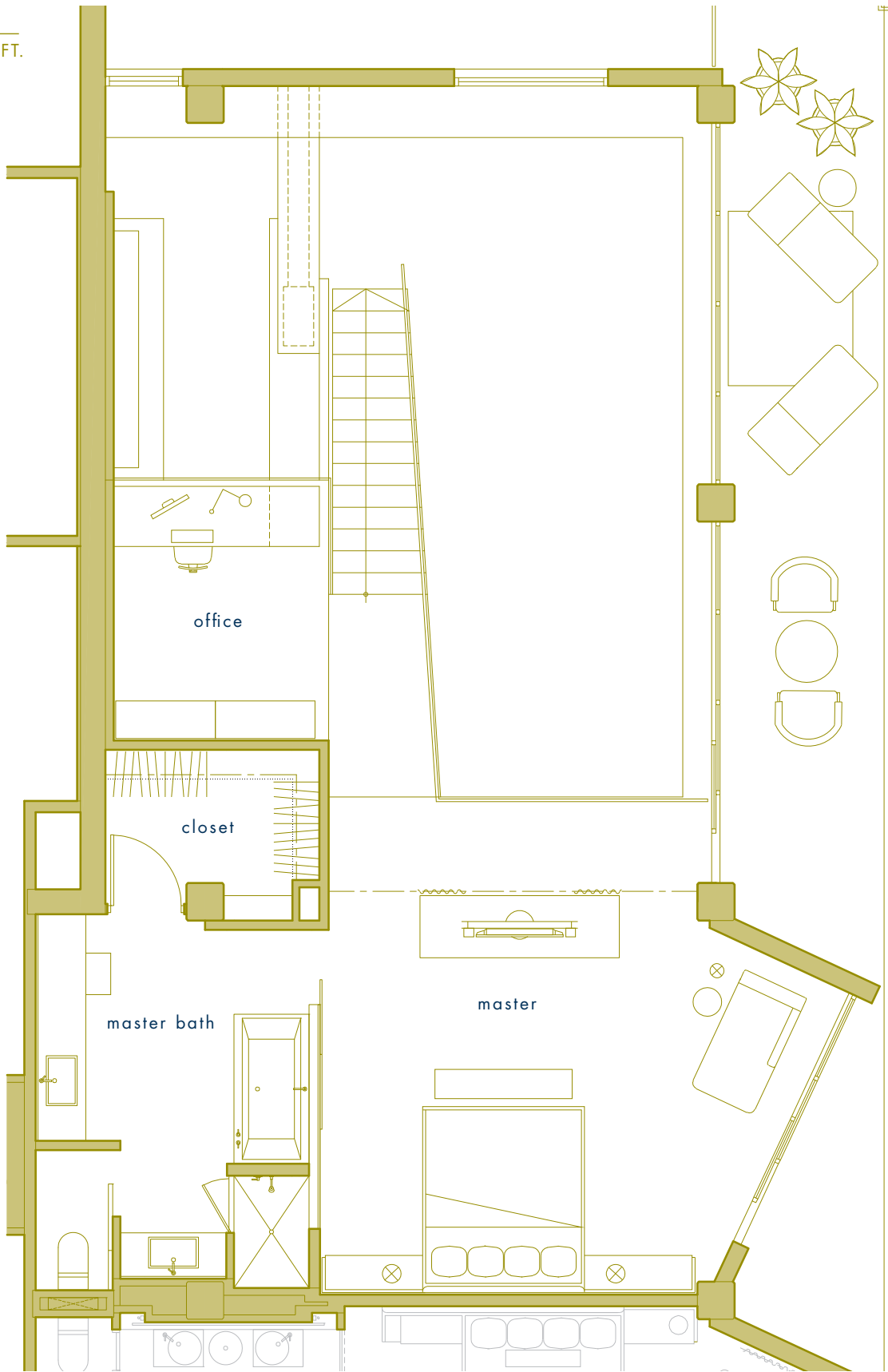
1335 INTERIOR
212 EXTERIOR
1547 TOTAL SQ. FT.



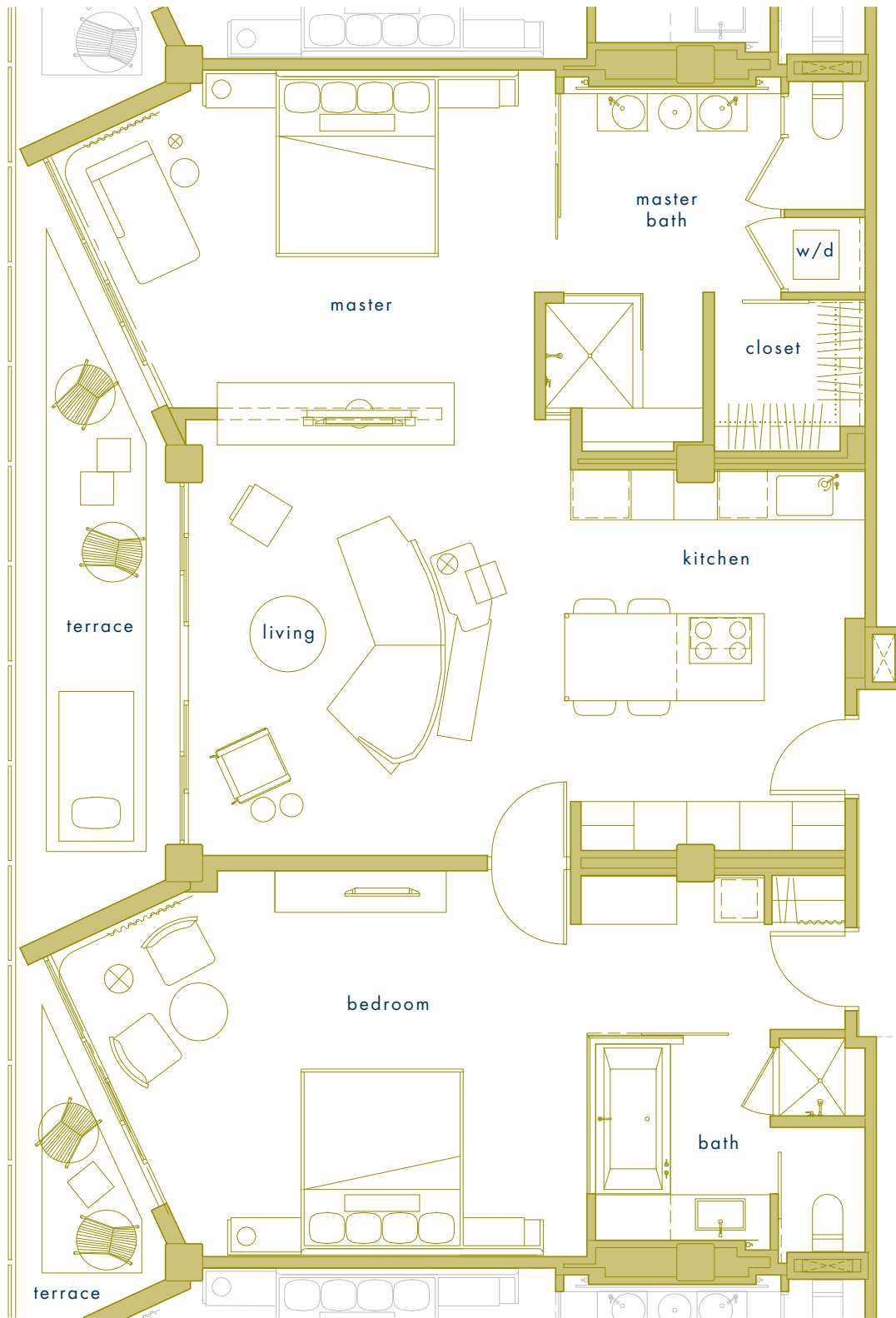
1995 INTERIOR
614 EXTERIOR
2609 TOTAL SQ. FT.



1995 INTERIOR
614 EXTERIOR
2609 TOTAL SQ. FT.



1336-1361 INTERIOR
224 EXTERIOR
1560-1585 TOTAL SQ. FT.



1768-1798 INTERIOR
328 EXTERIOR
2096-2126 TOTAL SQ. FT.

